

2021/2022

## HEAT, LIFE AND ATMOSPHERE

A real fire is a beautiful and romantic source of heat which creates a warm, cosy atmosphere. There is nothing quite like settling down and watching the flames flickering in the stove as a comfortable warmth spreads throughout the room. A real wood burning stove is an integral part of a home, and provides a wonderful focal point for the entire family during the colder months of the year.



**WESTFIRE**

THE ART OF DANISH ENGINEERING



ecodesign  
ready

# ATTENTION TO **DETAIL**

When the weather outside begins to chill, a stove naturally becomes the heart of the home. A centre focal point for all the family, it is essential to choose a brand you can trust. Westfire stands for high quality craftsmanship and impeccable attention to detail; leaving you safe in the knowledge that your stove will last for many years, performing to the highest levels of efficiency and environmental standards. When correctly used with well managed wood, your stove will be CO2-neutral making it a responsible option for a renewable energy source. For a functional and highly efficient stove with a focus on design, Westfire is the perfect choice.



ecodesign ready

WESTFIRE.UNIQ.26 / BLACK WITH SOAPSTONE 5,0 kW



ecodesign ready

WESTFIRE.UNIQ.32 / INSERT / WF / FULL GLASS FRONT 7,0 kW



## CAREFULLY DESIGNED FOR WARMTH

Westfire designs stoves with great care and attention to detail. A wood burning stove must complement the home in which it is installed since it will outlast both the furniture and the décor. Westfire has therefore developed a future-proof design characterised by simplicity, timelessness and contemporary technology.

Using a wood burning stove to heat your home is a natural process which does not contribute to the greenhouse effect. Westfire's stoves make effective use of thermal energy and are very environmentally friendly.

A stove brings the family closer – all members, young and old, can work together to split logs, bring in firewood and feed the fire. And the whole family can enjoy the great indoor climate and the natural heat produced by a wood burning stove.




ecodesign ready

WESTFIRE.UNIQ.32 / INSERT / NF / FULL GLASS FRONT 7,0 kW





ecodesign  
ready

 WESTFIRE.UNIQ.37 / BLACK 72 kW 



ecodesign  
ready

 WESTFIRE.UNIQ.37 / BLACK WITH PEDESTAL 1 72 kW 







ecodesign  
ready

WESTFIRE.UNIQ.37 / BLACK WALL-MOUNTED 72 kW ✓



ecodesign  
ready



WESTFIRE.UNIQ.37 LARGE / BLACK 72 kW ✓





ecodesign  
ready



 WESTFIRE.UNIQ.36 / BLACK 72 kW 

## BEAUTIFUL SOLUTIONS THAT **WORK**

Westfire is a tried-and-tested concept, with attention paid to every detail. We have many years' experience in the development of exciting and functional solutions for the home. We offer both hearth plates and chimneys to complement our range of stunning wood burning stoves, making it easy to create a stylish and exclusive look in your home.

ecodesign  
ready



 WESTFIRE.UNIQ.36 / BLACK WITH PEDESTAL 1 72 kW 









ecodesign ready

NEW

WESTFIRE.UNIQ.45 / BLACK

5,0 kW



FORMERLY WESTFIRE.UNIQ.18 / BLACK



ecodesign ready

NEW

WESTFIRE.UNIQ.44 / BLACK

5,0 kW



FORMERLY WESTFIRE.UNIQ.17 / BLACK

## ECONOMIC ADVANTAGES

Using wood to heat your home can yield huge savings, and it is often possible to recoup the investment in a new wood burning stove over a very short period of time. It is important to choose the right size of stove, and to position it correctly within the house, in order to obtain the greatest possible benefit from the heat which is emitted. Westfire has developed many different types of wood burning stoves, all available in different sizes with a range of options. Which, of course, means that you will get the most advantageous solution, whatever your requirements.



ecodesign  
ready



 WESTFIRE.UNIQ.35 / ON 50 MM BLOCK 4,6 kW 

ecodesign  
ready



 WESTFIRE.UNIQ.26 / BLACK WITH SOAPSTONE 5,0 kW 

## QUALITY STOVES IN LINE WITH THE LATEST TECHNOLOGY

Westfire has developed a complete range of wood burning stoves, flue pipes, chimneys and accessories recognisable by their clean lines. All Westfire's products are manufactured in accordance with the finest traditions of craftsmanship. The stoves incorporate the latest combustion technology, which ensures economical and clean combustion. Westfire's stoves are available with top or back flue outlets, making them suitable for new and older buildings alike.





WESTFIRE.UNIQ.26 / BLACK 5,0 kW ✓



**NEW** WESTFIRE.UNIQ.26 COMPACT / BLACK 5,0 kW ✓



WESTFIRE.UNIQ.35 / INSERT / 4-SIDED FRAME 4,6 kW ✓



WESTFIRE.UNIQ.35 / INSERT / 3-SIDED FRAME 4,6 kW ✓

## WESTFIRE INSET STOVES

A Westfire Inset stove is designed to fit beautifully into a wall, providing efficient heat and adding a touch of style to your living space. Westfire have created a range of inset stoves with dimensions to suite your requirements.

Uniq 35 - is a 400 mm wide body, designed to fit into a British fireplace wick can be installed with a 3 or 4 sided frame.

Uniq 23 - is a 600 mm wide body, it is available in new flat or curved door variants which can be installed with a 3 or 4 sided frame.

Uniq 32 - is a 800 mm wide body, it is available in steel or glass front variants which can be installed with wide 4 sided or narrow 4 sided frame options.

All models have direct air options.





ecodesign ready

WESTFIRE.UNIQ.32 / INSERT / WIDE FRAME 70 kW ✓



ecodesign ready

WESTFIRE.UNIQ.32 / INSERT, NARROW FRAME 70 kW ✓



ecodesign ready

WESTFIRE.UNIQ.32 / INSERT / NF / FULL GLASS FRONT 70 kW ✓

## STUNNING DESIGN AND A COMFORTABLE CLIMATE

Westfire manufactures a range of highly functional wood burning stoves that meet the most stringent requirements for environmentally friendly combustion. Convection stoves heat the air and spread it evenly throughout the room. At Westfire, you can choose the stove that best matches your requirements. Whatever your choice of Westfire stove, you are guaranteed an efficient and economical source of heat.





ecodesign ready

WESTFIRE.UNIQ.32 / INSERT / WF / FULL GLASS FRONT 7,0 kW

## WESTFIRE HEARTH PLATES

	STANDARD PLATE SMALL	STANDARD PLATE MEDIUM	STANDARD PLATE BIG	TEARDROP SHAPED PLATE	TEARDROP SHAPED PLATE	TRUNCATED PLATE	SQUARE PLATE	RECTANGULAR PLATE
<b>WF STEEL PLATES</b> 2 mm			Product no. 5015	Product no. 5011				
<b>WF SLATE PLATES</b> 20 mm		Product no. 5007 (G)	Product no. 5005 (G)	Product no. 5001 (G)				
<b>WF GLASS PLATES</b> 12 mm Hardened glass		Product no. p19	Product no. p6		Product no. p15	Product no. p14	Product no. p13	Product no. p18
<b>WF GLASS PLATES</b> 6 mm Hardened glass	Product no. p16		Product no. p6	Product no. p11	Product no. p15	Product no. p14	Product no. p13	

(G) = Available in grey

## TECHNICAL DATA

	TESTED OUTPUT	RECOMMENDED AREA	LOADING DOOR (LOG LENGTH)	TESTING CE NS EN DEFRA	DISTANCE COMBUSTIBLE REAR	DISTANCE COMBUSTIBLE SIDES	ENERGY
WESTFIRE.UNIQ.26 WESTFIRE.UNIQ.26 COMPACT	5,0 kW	30-100 m <sup>2</sup>	30 cm	● ● ● ●	15 cm	35 cm	A <sup>+</sup>
WESTFIRE.UNIQ.32 INSERT (NARROW FRAME) WESTFIRE.UNIQ.32 INSERT (WIDE FRAME)	7,0 kW	50-150 m <sup>2</sup>	65 cm	● ● ● ●	30 cm	20 cm	A
WESTFIRE.UNIQ.35 50 MM BLOCK WESTFIRE.UNIQ.35 INSERT, 4-SIDED WESTFIRE.UNIQ.35 INSERT, 3-SIDED	4,6 kW	30-100 m <sup>2</sup>	29 cm	● ● ● ●	20 cm	20 cm	A
WESTFIRE.UNIQ.36 WESTFIRE.UNIQ.36 WALL-MOUNTED WESTFIRE.UNIQ.36 PEDESTAL 1 WESTFIRE.UNIQ.36 COMPACT	7,2 kW	50-150 m <sup>2</sup>	35 cm	● ● ● ●	17,5 cm	45 cm	A
WESTFIRE.UNIQ.37 WESTFIRE.UNIQ.37 WALL-MOUNTED WESTFIRE.UNIQ.37 LARGE WESTFIRE.UNIQ.37 PEDESTAL 1	7,2 kW	50-150 m <sup>2</sup>	35 cm	● ● ● ●	10 cm	60 cm	A
WESTFIRE.UNIQ.44 (FORMERLY UNIQ 17) WESTFIRE.UNIQ.45 (FORMERLY UNIQ 18) WESTFIRE.UNIQ.46 (FORMERLY UNIQ 18 LOGDOOR)	5,0 kW	30-100 m <sup>2</sup>	32 cm	● ● ● ●	10 cm	30 cm	A <sup>+</sup>

Flue Outlet: Top and Rear flue outlet suitable for 125 mm single wall pipe with internal placement.  
Flue Collar is also suitable for 150 mm ID Flue pipe with external placement where regulations allow.

ecodesign ready

Ecodesign is the European-wide program to lower emissions. It is due to come into force in 2022. Westfire stoves have created new stoves that will meet the lower emission limits set out in the new standard now, so you can be comfortable that your new stove is one of the cleanest burning in the market today.

Approved for use in Smoke Control Areas



Westfire combustion chambers are very efficient and designed to burn cleanly. Stoves displaying the tick off logo are approved for burning wood in a smoke control area, special note should be taken to the manufacturer's instructions on burning stoves in a smoke control zone. Wood burnt should be split and dry and have a moisture content of 15% or below and be free of chemical treatments. When purchasing a Westfire stove please request a DEFRA approved model to ensure you receive an approved stove.

**ENERG** Y U A  
енергия · енергѝя IE IA

WESTFIRE UNIQ.36 / UNIQ.37

**A**

**7,2 kW**

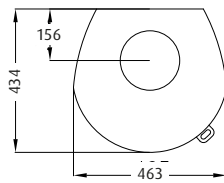
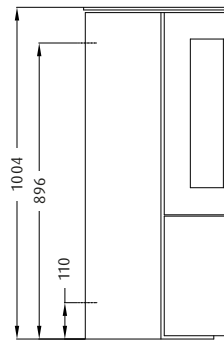
ENERGIA · ЕНЕРГИЯ · ЕΝΕΡΓΕΙΑ · ENERGIJA · ENERGY · ENERGIE · ENERGI

2015/1186

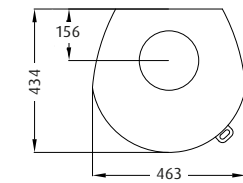
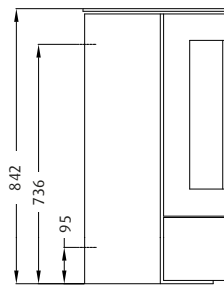


# MODELS

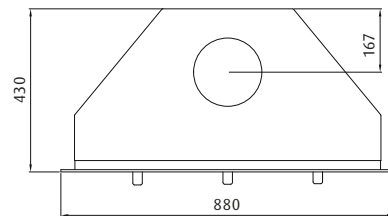
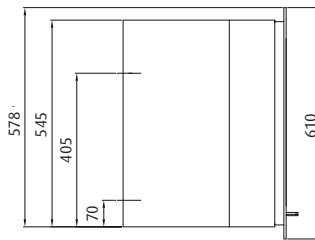
**WESTFIRE.UNIQ.26**  
WEIGHT: 105 KG



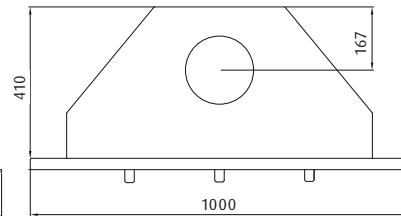
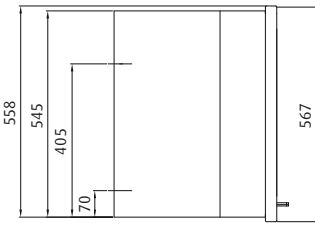
**WESTFIRE.UNIQ.26 COMPACT**  
WEIGHT: 95 KG



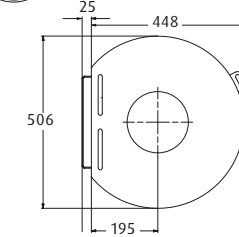
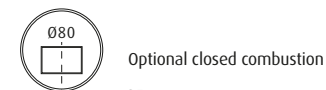
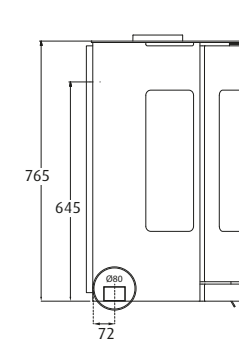
**WESTFIRE.UNIQ.32 / INSERT**  
NARROW 4-SIDED FRAME  
WEIGHT: 110 KG



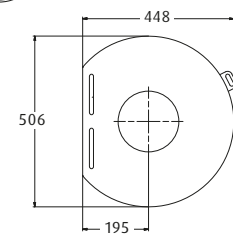
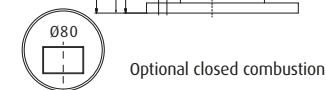
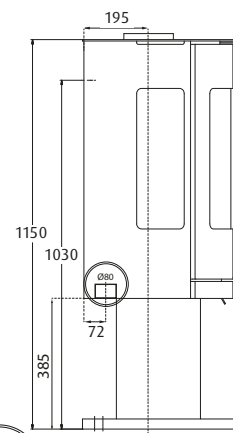
**WESTFIRE.UNIQ.32 / INSERT**  
WIDE 4-SIDED FRAME  
WEIGHT: 110 KG



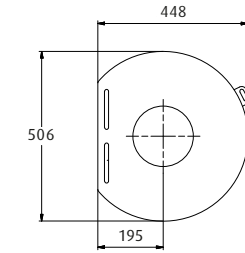
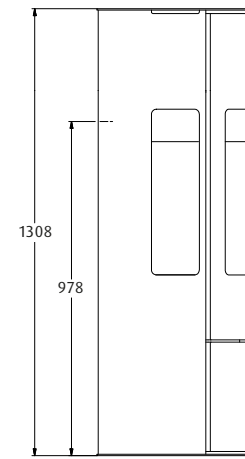
**WESTFIRE.UNIQ.36**  
**WESTFIRE.UNIQ.37**  
WALL-MOUNTED / WEIGHT: 85 KG



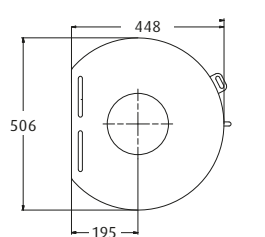
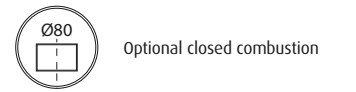
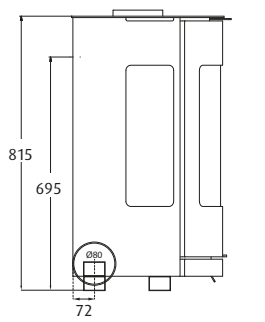
**WESTFIRE.UNIQ.36**  
**WESTFIRE.UNIQ.37**  
PEDESTAL 1 / WEIGHT: 95 KG



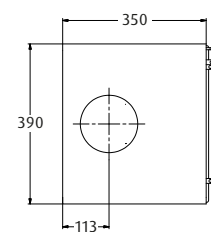
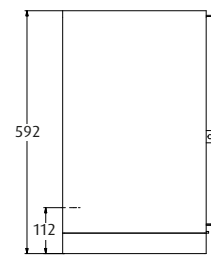
**WESTFIRE.UNIQ.37 / LARGE**  
WEIGHT: 110 KG



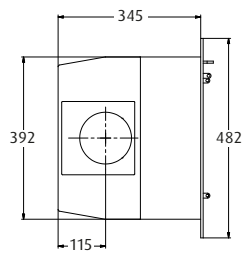
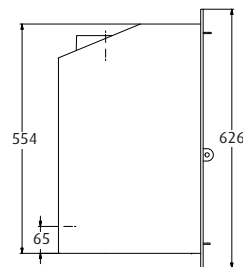
**WESTFIRE.UNIQ.36**  
**WESTFIRE.UNIQ.37**  
COMPACT / WEIGHT: 85 KG



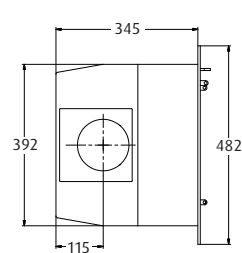
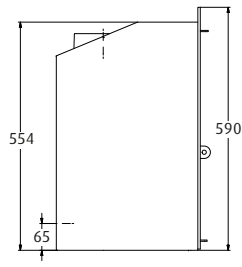
**WESTFIRE.UNIQ.35 / 50 MM BLOCK**  
WEIGHT: 95 KG



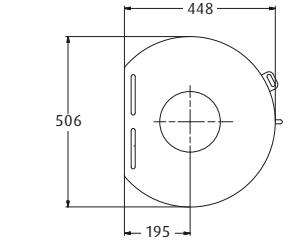
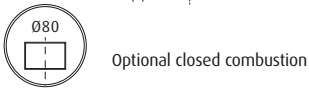
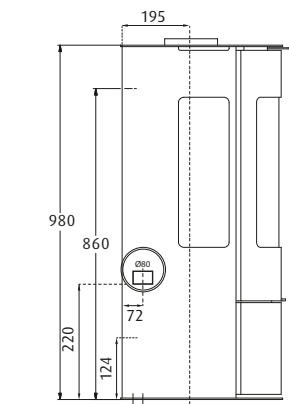
**WESTFIRE.UNIQ.35 / INSERT**  
4-SIDED FRAME  
WEIGHT: 75 KG



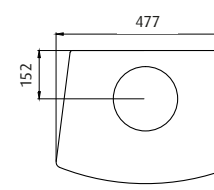
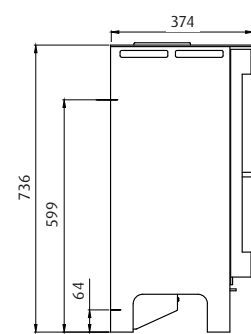
**WESTFIRE.UNIQ.35 / INSERT**  
3-SIDED FRAME  
WEIGHT: 75 KG



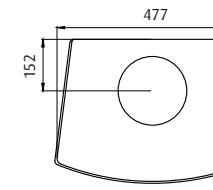
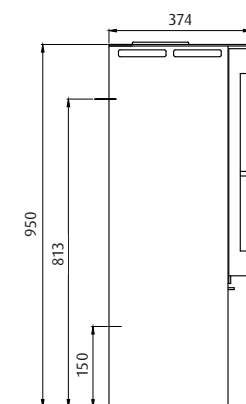
**WESTFIRE.UNIQ.36**  
**WESTFIRE.UNIQ.37**  
WEIGHT: 90 KG



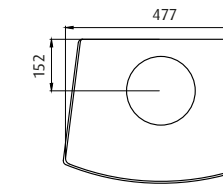
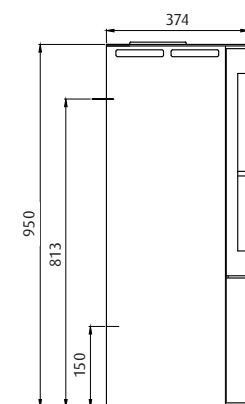
**WESTFIRE.UNIQ.44**  
(FORMERLY UNIQ 17)  
WEIGHT: 82 KG



**WESTFIRE.UNIQ.45**  
(FORMERLY UNIQ 18)  
WEIGHT: 90 KG



**WESTFIRE.UNIQ.46**  
(FORMERLY UNIQ 18 WITH LOGDOOR)  
WEIGHT: 90 KG







WESTFIRE.UNIQ.32 / INSERT, NARROW FRAME

WESTFIRE.UNIQ.45 / HANDLE

WESTFIRE.UNIQ.32 / INSERT, WIDE FRAME

## QUALITY YOU CAN FEEL

All wood burning stoves from Westfire carry the CE mark. A CE/EN approval means that the stoves have been tested and approved by the Danish Technological Institute in accordance with EN 13240. The CE mark is your guarantee that the stove meets a number of stringent requirements as regards safety, the environment and fuel economy. Westfire stoves are characterised by a number of technical advantages that ensure their long durability, high heating efficiency and reliant operation.

### Fuel types

Westfire stoves are accredited for burning wood and CE marked for this purpose. Although the appliances will burn other fuels Westfire do not recommend the use of such fuels in our appliances.



TEL. +45 7522 5352 / E-MAIL: INFO@WESTFIRE.DK / WWW.WESTFIRE.DK

DISTRIBUTOR



WESTFIRE 2021/2022 2th EDITION / THE ART OF DANISH ENGINEERING / WWW.WESTFIRE.DK

UK IMPORTER: EUROSTOVE LTD / UNIT H1, MENDIP INDUSTRIAL ESTATE / ROOKSBRIDGE, AXBRIDGE,SOMERSET. BS262UG  
 TEL: 01934 750500 / FAX: 01173 156207 / EMAIL: INFO@EUROSTOVE.CO.UK / WWW.EUROSTOVE.CO.UK